



**REGAL REALTY**  
CAYMAN

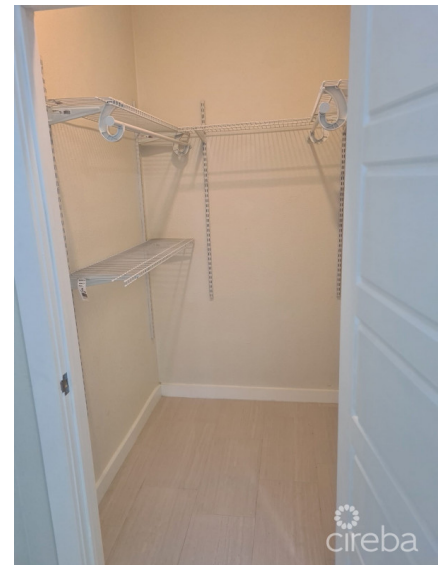
Queens Court, Seven Mile Beach, Grand Cayman, Cayman Islands  
+1 (345) 916-7080  
info@regalrealtycayman.com  
www.regalrealtycayman

## **BEAUTIFULLY RENOVATED 3BED HOME WITH DEN + INCOME PRODUCING 1 BED APARTMENT**

Lower valley, Savannah & Bodden Town, Cayman Islands

MLS# 416599

**CI\$587,000**





**Sandra Simmons-Francis**  
sandra@regalrealty.ky

Complete with a separate, income generating apartment, this beautifully renovated property is now available for sale. Situated near the entrance to Northward Road, this house offers a spacious and bright living space, perfect for those seeking a comfortable and stylish home. This well-appointed property features 3 bedrooms and two bathrooms in the main home, plus a den, providing ample space for families of all sizes. The crisp and fresh interior, filled with natural light, creates a warm and inviting atmosphere throughout the home. The transitional style offers a blend of modern and traditional elements, appealing to a diverse range of tastes. One of the unique features of this property is the income producing apartment with its own separate entrance. Featuring a full sized kitchen, washer/dryer, and one bedroom, this additional living space provides an opportunity for rental income or can be used as a private guest suite. The choice is yours! The home comes fully furnished with all new furniture and appliances, ensuring that you can move in hassle-free and start enjoying your new home immediately. Whether you are seeking a new personal residence or exceptional rental investment, don't miss out on the opportunity to own this incredible property. Contact me today to schedule a viewing and make this dream home your reality!

## Essential Information

Type	Status	MLS	Listing Type
<b>Residential (For Sale)</b>	<b>Current</b>	<b>416599</b>	<b>Single Family Home</b>

## Key Details

Bed	Bath	Block & Parcel	Year Built	Old Price
<b>4</b>	<b>3</b>	<b>38B,101</b>	<b>1987</b>	<b>0.00</b>

Sqft  
**2174**

Acreage  
**0.2000**

## Additional Fields

Block	Lot Size	Parcel	Views
<b>38B</b>	<b>0.2</b>	<b>101</b>	<b>Garden View</b>

## Property Features

Den	Furnished
<b>Yes</b>	<b>Yes</b>