



REGAL REALTY
CAYMAN

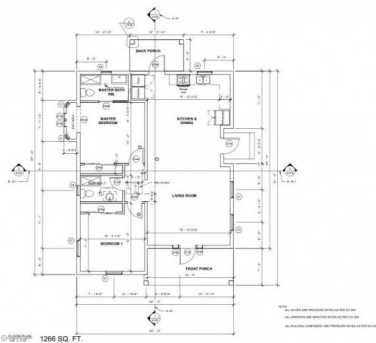
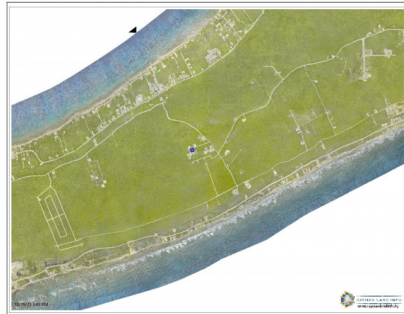
Queens Court, Seven Mile Beach, Grand Cayman, Cayman Islands
+1 (345) 916-7080
info@regalrealtycayman.com
www.regalrealtycayman

CAYMAN BRAC CENTRAL FAMILY HOME - COMPLETION EARLY 2025

Cayman Brac Center, Cayman Brac, Cayman Islands

MLS# 416714

CI\$349,000





Lucy Wood
lucy@regalrealty.ky

Welcome to Middle Bluff Ct! Located in the heart of Cayman Brac, this brand new home is the epitome of modernity and comfort. With two spacious bedrooms and two bathrooms, this property offers ample space for you and your loved ones to thrive. As you enter, you'll be greeted by a beautifully designed open floor plan, allowing for seamless flow between the living room, dining area, and kitchen. The kitchen boasts all new appliances, including a gas stove that will surely bring out your inner chef. The sleek porcelain tile flooring adds a touch of elegance throughout the house. Looking to relax or entertain? Step out onto the covered patio, where you can enjoy the fresh island breeze while sipping your morning coffee or hosting gatherings with friends and family. Additionally, there's an option for a standing seam roof that not only enhances the aesthetics but also provides extra durability. Situated on a high and dry lot, this property offers peace of mind during inclement weather. Say goodbye to any worries of flooding! Middle Bluff Ct is currently under construction and is set to be completed by early 2025. This presents a unique opportunity for you to personalize the finishing touches according to your preferences. Don't miss out on this fantastic opportunity to own a brand new home in Cayman Brac Central. Contact me today to schedule a viewing or for more information. Your dream home awaits! Aerial view sourced from www.caymanlandinfo.ky

Essential Information

Type	Status	MLS	Listing Type
Residential (For Sale)	Current	416714	Single Family Home

Key Details

Bed	Bath	Block & Parcel	Year Built	Old Price
2	2	99A,261	2024	0.00
Sqft				
1266				
Acreage				
0.2364				

Additional Fields

Block	Lot Size	Parcel	Views
99A	0.24	261	Garden View
Foundation	Zoning		
Slab	Low Density residential		