



REGAL REALTY
CAYMAN

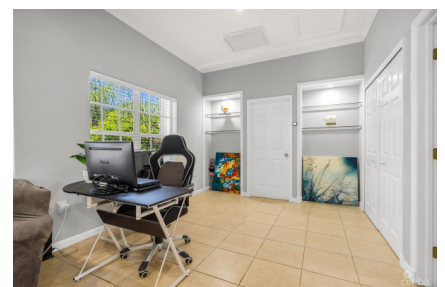
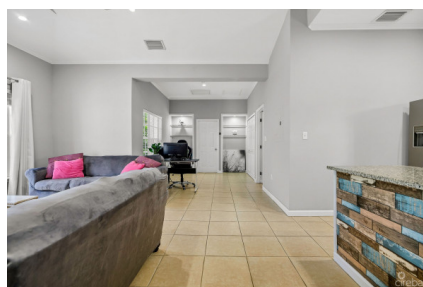
Queens Court, Seven Mile Beach, Grand Cayman, Cayman Islands
+1 (345) 916-7080
info@regalrealtycayman.com
www.regalrealtycayman

SUPER SPACIOUS 1BED/1BATH--COCO RETREAT

George Town South, George Town, Cayman Islands

MLS# 417891

CI\$449,000





Sandra Simmons-Francis
sandra@regalrealty.ky

Welcome to Coco Retreat, where convenience meets tranquility in this super spacious 1,156 sq ft, 1 bedroom, 1 bathroom unit. Perfectly situated across from Pickleball Cayman, close to Cayman Prep, and just minutes from central George Town, this home features a private entrance with separate storage. Ascend the tiled stairs to a bright, open-plan living area with high vaulted ceilings and ample natural light. The kitchen is equipped with natural wood cupboards, granite countertops, and a stainless-steel fridge. The dining area, currently set up as a home office, offers flexibility to suit your lifestyle needs. French doors off the living room lead to a charming patio overlooking the serene pool. The generous bedroom includes a walk-in closet and connects to a Jack and Jill bathroom with a renovated shower. A laundry closet with extra storage space, washer/dryer combo, tankless water heater, and a water-softening system add to the convenience of this home. Coco Retreat is pet-friendly and offers three swimming pools and two gyms. This property is ideal for first-time buyers or as a rental investment. Embrace the opportunity to own a piece of paradise at Coco Retreat. Contact us today to schedule a viewing and make this stunning unit your new home!

Essential Information

| | | | |
|------------------------|--------|--------|--------------|
| Type | Status | MLS | Listing Type |
| Residential (For Sale) | New | 417891 | Condominium |

Key Details

| | | | | |
|------|------|----------------|------------|-----------|
| Bed | Bath | Block & Parcel | Year Built | Old Price |
| 1 | 1 | 14D,430H12 | 2004 | 0.00 |
| Sqft | | | | |
| 1156 | | | | |

Additional Fields

| | | | |
|-----------|-------------|-----------|------------|
| Block | Parcel | Views | Foundation |
| 14D | 430H12 | Pool View | Slab |
| Furnished | Floor Level | | |
| Partially | 2 | | |

Property Features

| |
|------|
| Pool |
| Yes |