

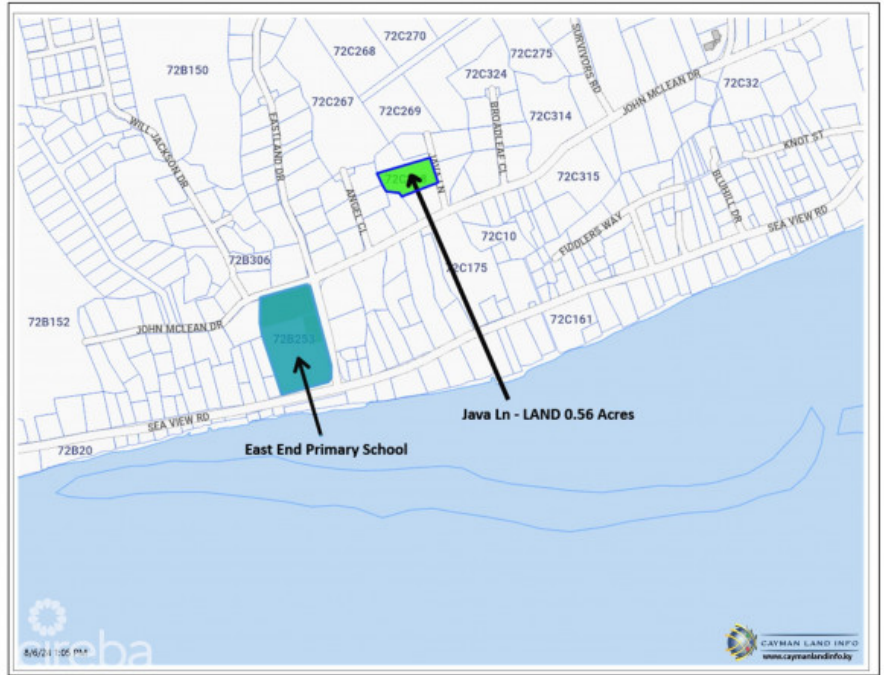
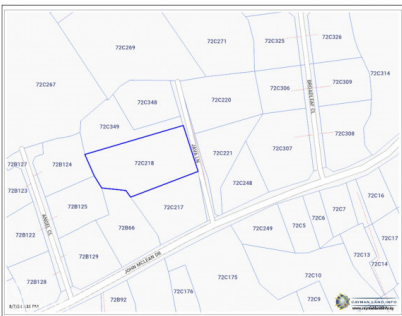
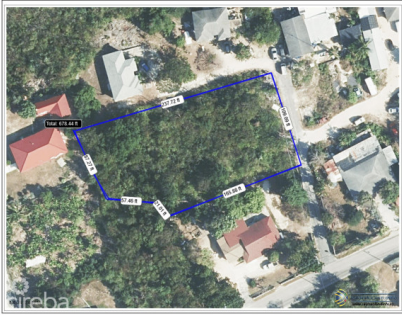


## JAVA LN - HUGE LOT - 0.56 ACRES - EAST END

East End, East End & Colliers, Cayman Islands

MLS# 418058

**CI\$148,000**





**Osbert Francis**  
bert@regalrealty.ky

This huge Residential Lot of 0.56-acres located in East End community, Grand Cayman, offers a unique opportunity for those wishing to build their dream home in a tropical paradise setting. Large enough to have all the potential to build a small condominium or a large Duplex / Triplex. Strategic Location: Located a short distance from the stunning East End beaches, with easy access to restaurants, shops, and essential services. Nearby Amenities: • Beaches: Just 2 minutes by car or 14 minutes' walk from beautiful white sandy beaches, ideal for relaxation, swimming, and water activities. • Dining: Close to a variety of restaurants offering local and international cuisine, allowing you to enjoy delicious meals with sea views. • Activities: Easy access to diving centers, snorkeling, and other recreational activities, making East End a sought-after destination for nature and adventure lovers. • Convenience: Shops, schools, and healthcare services are easily reachable, ensuring maximum convenience for residents. • East End Primary School: 1 minute drive or 4-minute walk • Health City Hospital: 5 minutes by car • Gas Station: 2 minutes by car • Power and water available at lot. Investment Opportunity: East End is one of the growing areas of Grand Cayman, with potential for property value appreciation, making this lot a smart choice for investors. Don't miss the chance to own a piece of paradise in East End, Grand Cayman. Contact us today for more information and to schedule an on-site visit.

## Essential Information

Type <b>Land (For Sale)</b>	Status <b>New</b>	MLS <b>418058</b>	Listing Type <b>Med density residential</b>
--------------------------------	----------------------	----------------------	--

## Key Details

Width <b>108</b>	Depth <b>240</b>	Block & Parcel <b>72C,218</b>	Old Price <b>0.00</b>
---------------------	---------------------	----------------------------------	--------------------------

Acreage  
**0.5600**

## Additional Fields

Block <b>72C</b>	Parcel <b>218</b>	Views <b>Inland</b>	Zoning <b>Medium Density Residential</b>
---------------------	----------------------	------------------------	---

Road Frontage  
**108**