

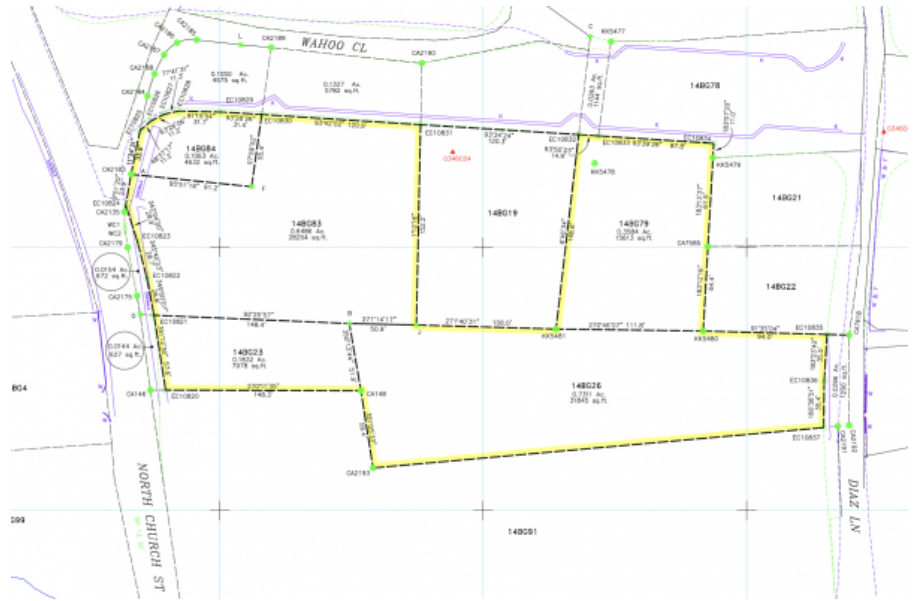


## NORTH CHURCH ST PRIME DEVELOPMENT SITE

George Town Central, George Town, Cayman Islands

MLS# 418263

**US\$5,300,000**



**Sandra Simmons-Francis**  
sandra@regalrealty.ky

Prime George Town Land Assemblage offering direct ocean front views along with an already strong but, about to be significantly improved, location. The site boasts 240 feet (approx) of North Church Street road frontage with impressive ocean views and an additional 500 feet (approx) on the new Wahoo Close/Godfrey Nixon Way extension linking the Esterly Tibbets Bypass directly to North Church Street across Eastern Avenue. This major new road, once opened will make this already attractive site even more desirable and ideal for an premier office, mixed use of primarily retail development with high kerb appeal and great views. The site, which will still total just over two-acres once the road is complete, can be developed to five storeys and the rear lots provide excellent parking and the opportunity for further development as say storage units or apartments with direct access onto Diaz Lane. The site is high and dry and well elevated to around 8' above mean sea level and currently developed as an asphalt-surfaced parking lot offering an income opportunity whilst plans for the site are being developed.

### Essential Information

|                        |                |               |                   |
|------------------------|----------------|---------------|-------------------|
| Type                   | Status         | MLS           | Listing Type      |
| <b>Land (For Sale)</b> | <b>Current</b> | <b>418263</b> | <b>Commercial</b> |

## Key Details

|                          |                     |   |                          |
|--------------------------|---------------------|---|--------------------------|
| Width<br><b>240</b>      | Depth<br><b>540</b> | Block & Parcel<br><b>14BG,23,26,78,79,83,84</b> | Old Price<br><b>0.00</b> |
| Acreage<br><b>2.7400</b> |                     |   |                          |

## Additional Fields

|                             |   |                            |                             |
|-----------------------------|---|----------------------------|-----------------------------|
| Block<br><b>14BG</b>        | Parcel<br><b>23, 26, 78, 79, 83, 84</b> | Views<br><b>Water View</b> | Zoning<br><b>Commercial</b> |
| Road Frontage<br><b>800</b> | Soil<br><b>Other</b>                    |                            |                             |