

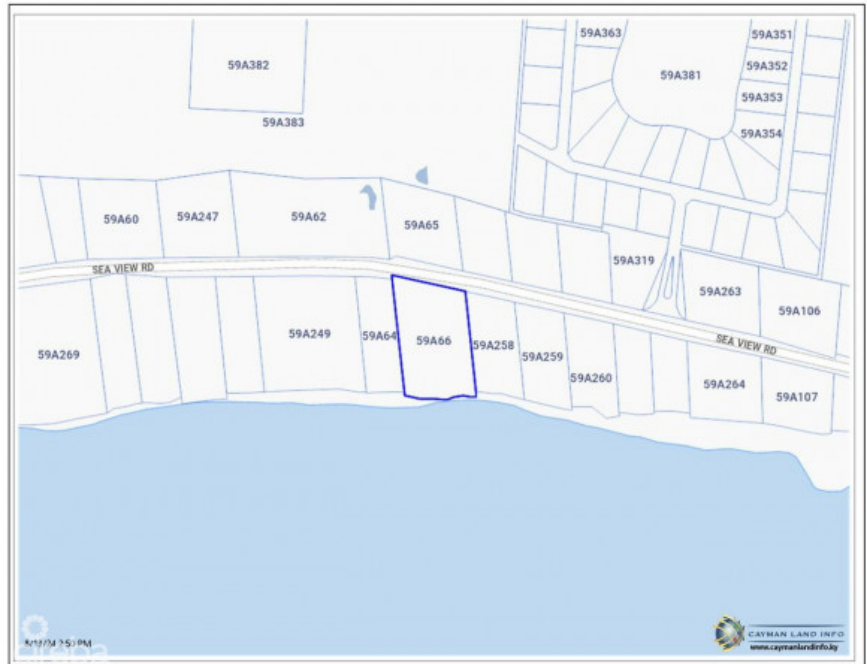


EXCLUSIVE BEACHFRONT ESTATE PARCEL ON FRANK SOUND - 200 FT OF PRISTINE BEACHFRONT!

Midland East

MLS# 418325

CI\$1,850,000



Osbert Francis
bert@regalrealty.ky

This expansive beachfront estate parcel on Frank Sound offers 200 ft of stunning shoreline with a generous 300 ft depth extending to the main road. Whether you envision a luxurious estate home or a 30-bedroom condo complex, this prime piece of land provides ample space for development, while ensuring complete privacy. Utilities, including city water and electricity, are readily accessible from the main road, making the building process smooth and convenient. Located in a tranquil and environmentally protected area, this parcel offers incredible snorkelling right at your doorstep, surrounded by the unspoiled beauty of Frank Sound. Perfect for those seeking peace, privacy, and a unique development opportunity off the beaten path.

Essential Information

Type
Land (For Sale)

Status
Current

MLS
418325

Listing Type
Low density residential

Key Details

Width 200	Depth 300	Block & Parcel 59A,66	Old Price 0.00
Acreage 1.2500			

Additional Fields

Block 59A	Parcel 66	Views Beach Front	Zoning Low Density residential
Sea Frontage 198	Road Frontage 200	Soil Sand	