



**REGAL REALTY**  
CAYMAN

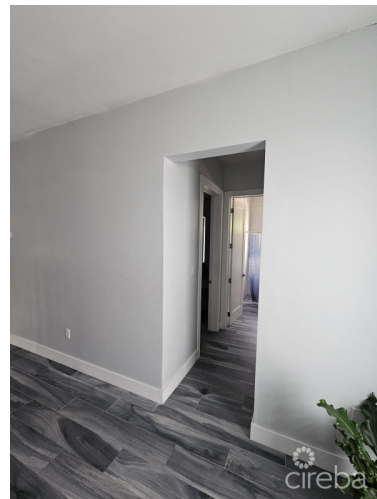
Queens Court, Seven Mile Beach, Grand Cayman, Cayman Islands  
+1 (345) 916-7080  
info@regalrealtycayman.com  
www.regalrealtycayman

## BEACH BAY HOME

Lower valley, Savannah & Bodden Town, Cayman Islands

MLS# 418458

**CI\$840,000**





**Sandra Simmons-Francis**  
sandra@regalrealty.ky

Welcome to your coastal paradise! This exquisite 3-bedroom, 2-bathroom home in the sought-after Beach Bay area offers the perfect blend of luxury and comfort. With an open floor plan that maximizes space and natural light, this home is designed for modern living and entertaining. Key Features: • Spacious Open Floor Plan: The inviting living area seamlessly flows into the dining space and kitchen, creating an ideal environment for gatherings and family time. • Gourmet Kitchen: The well-appointed kitchen features high-end stainless steel appliances, granite countertops, and ample cabinetry, making it a chef's dream. • Master Suite Retreat: The generous master bedroom boasts an en-suite bathroom, dual vanities, providing a private oasis for relaxation. • Two Additional Bedrooms: Perfect for family, guests, or a home office, the two additional bedrooms are bright and spacious, sharing a stylishly designed second bathroom. • Prime Location: Just a short stroll to the beach, this home is ideally situated for those who love sun, sand, and sea. Enjoy nearby amenities, including shops, restaurants, and recreational activities. Additional Features: • Central air conditioning • Ample storage space • Parking for multiple vehicles Don't Miss Out! This beach bay home is a rare find and won't last long on the market. Schedule your private showing today and experience the beauty and tranquility of coastal living!

## Essential Information

Type	Status	MLS	Listing Type
<b>Residential (For Sale)</b>	<b>Current</b>	<b>418458</b>	<b>Single Family Home</b>

## Key Details

Bed	Bath	Block & Parcel	Year Built	Old Price
<b>3</b>	<b>2</b>	<b>32D,255</b>	<b>2022</b>	<b>0.00</b>
Sqft				
<b>2470</b>				
Acreage				
<b>0.3320</b>				

## Additional Fields

Block	Lot Size	Parcel	Views
<b>32D</b>	<b>0.33</b>	<b>255</b>	<b>Garden View</b>
Foundation	Zoning	Garage	Furnished
<b>Slab</b>	<b>Agriculture/Residential</b>	<b>2</b>	<b>Partially</b>