



REGAL REALTY
CAYMAN

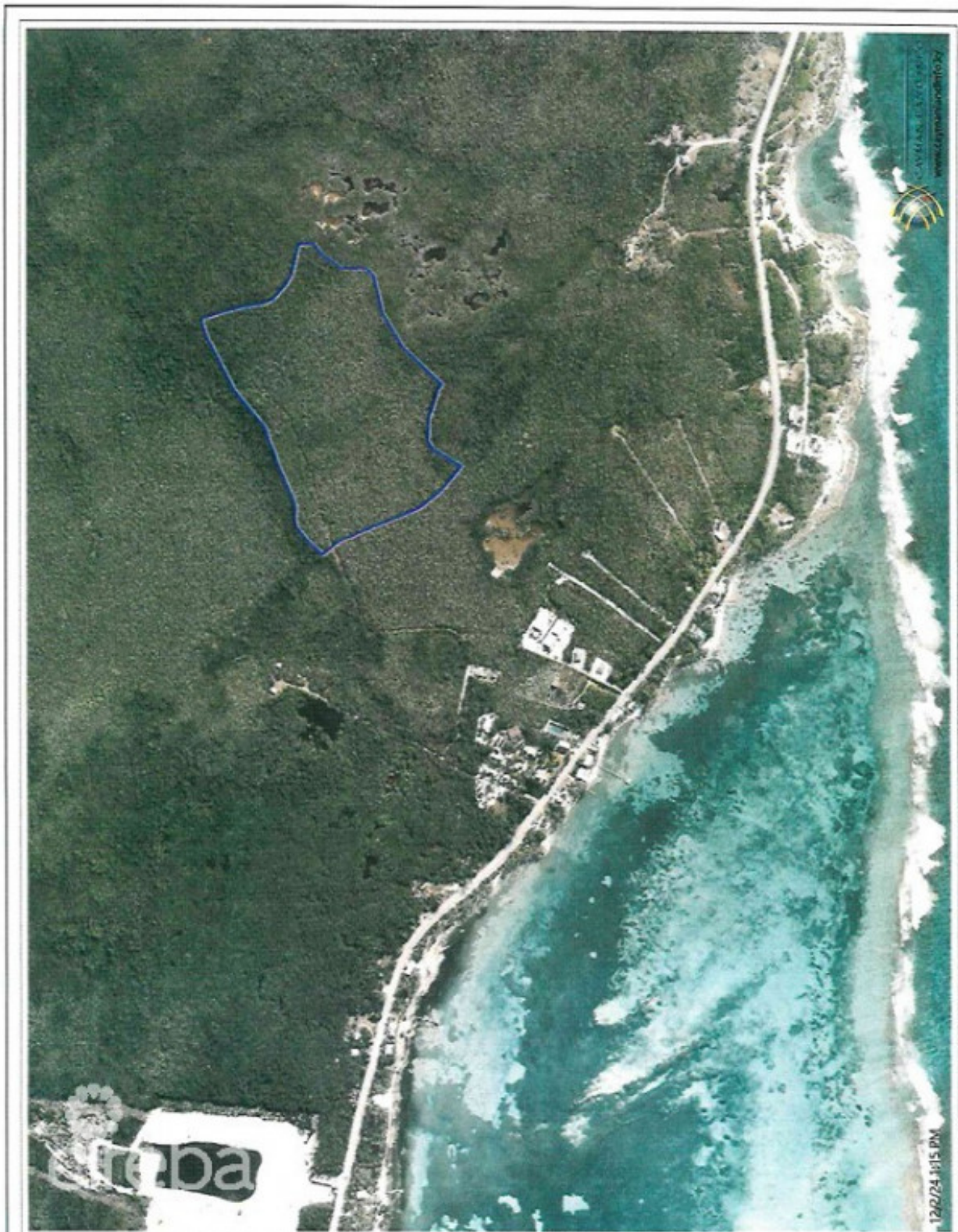
Queens Court, Seven Mile Beach, Grand Cayman, Cayman Islands
+1 (345) 916-7080
info@regalrealtycayman.com
www.regalrealtycayman

EAST END LAND

East Interior, East Interior, Cayman Islands

MLS# 418541

CI\$2,900,000





Lucy Wood
lucy@regalrealty.ky

Explore the endless potential of this expansive 36-acre parcel of pristine land, nestled in the tranquil East Interior. Perfectly positioned for development, this vast property offers a blank canvas for visionary projects such as a private estate, eco-resort, agricultural ventures, or residential subdivision. Features: Prime Location: Situated in a serene area, away from the bustle, yet within reach of essential amenities. Development Potential: Ample space for large-scale projects with significant investment appeal. Natural Beauty: Lush surroundings provide an idyllic backdrop for nature-inspired developments. Accessibility: Convenient road access ensures seamless connectivity. Whether you're an investor seeking a lucrative opportunity or a developer with big dreams, this rare property is ready to bring your vision to life.

Essential Information

Type	Status	MLS	Listing Type
Land (For Sale)	Current	418541	Low density residential

Key Details

Width	Depth	Block & Parcel	Old Price
980	1586	63A,23	0.00
Acreage			
36.0000			

Additional Fields

Block	Parcel	Views	Zoning
63A	23	Garden View	Agriculture/Residential
Road Frontage	Soil		
980	Black		