



REGAL REALTY
CAYMAN

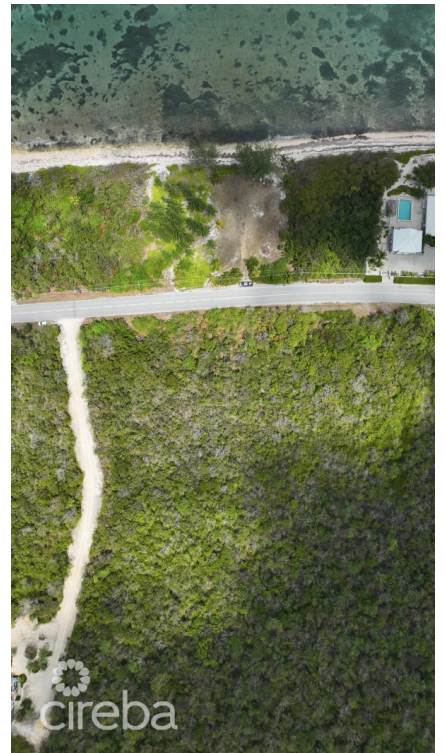
Queens Court, Seven Mile Beach, Grand Cayman, Cayman Islands
+1 (345) 916-7080
info@regalrealtycayman.com
www.regalrealtycayman

NATURE WALK LOT 3

N.E. Coast, East End & Colliers, Cayman Islands

MLS# 418765

CI\$138,000





Michael Day
michael@regalrealty.ky

Versatile .23-Acre Lot on Queen’s Highway Residential & Agricultural Land Near Wyndham Resort This .23-acre inland lot, located along Queen’s Highway, offers a prime opportunity for residential or agricultural development. Just past the Wyndham Resort, this parcel provides a versatile investment for those seeking a private home, small farm, or sustainable living space in a peaceful yet accessible location. Strategic Location & Development Potential Situated along one of Grand Cayman’s major roadways, this lot ensures easy access to nearby amenities while maintaining privacy and open space. The inland position offers protection from coastal elements, making it a secure choice for long-term development. Whether you envision a tranquil home surrounded by lush greenery or a small-scale agricultural project, this land provides the flexibility to bring your vision to life. Its proximity to resorts, beaches, and shopping adds further appeal for those looking to balance seclusion with convenience. Property Highlights: Size: .23 acres (approx. 10,225 sq. ft.) Zoning: Residential & Agricultural Location: Inland, along Queen’s Highway Accessibility: Minutes from Silver Reef Redicencies, beaches, and essential services Development Options: Ideal for a home, small farm, or investment property Endless Possibilities Await With its prime location and flexible zoning, this lot is a rare investment opportunity in one of Grand Cayman’s sought-after areas. Whether you’re looking to build a private residence, start an agricultural venture, or hold for future growth, this inland lot is an excellent choice. Contact us today to learn more about this unique property and take the next step in designing your future. • Title: Versatile .30-Acre Lot on Queen’s Highway – Residential & Agricultural • Discover a .30-acre inland lot on Queen’s Highway, zoned for residential & agricultural use. Ideal for development near Wyndham Resort. Contact us today! • Keyphrase: Inland lot on Queen’s Highway

Essential Information

Type Land (For Sale)	Status Current	MLS 418765	Listing Type Low density residential
--------------------------------	--------------------------	----------------------	--

Key Details

Width 80	Depth 100	Block & Parcel 61A,47H3	Old Price 0.00
Acreage 0.2340			

Additional Fields

Block
61A

Parcel
47H3

Views
Garden View

Zoning
Agriculture/Residential