



**REGAL REALTY**  
CAYMAN

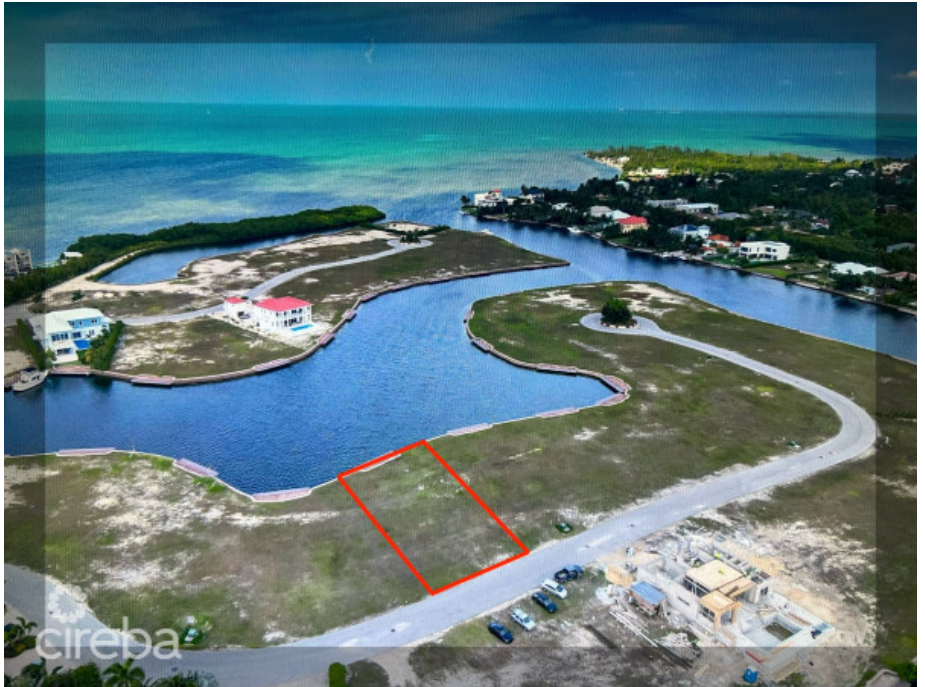
Queens Court, Seven Mile Beach, Grand Cayman, Cayman Islands  
+1 (345) 916-7080  
info@regalrealtycayman.com  
www.regalrealtycayman

## HARBOUR REACH - NORTH FACING LOT .3563 ACRES

Prospect, Grand Harbour, Red Bay & Prospect, Cayman Islands

MLS# 418871

**CI\$698,600**





**Osbert Francis**  
bert@regalrealty.ky

Presenting an exceptional opportunity to own a prime piece of canal-fronting land in the prestigious Harbour Reach, Grand Cayman. This .3563-acre parcel, equating to 15,553 square feet, offers an unparalleled setting for those seeking a serene and luxurious lifestyle. Located in the sought-after Grand Harbour area, this north-facing parcel boasts direct canal access, making it an ideal location for boating enthusiasts. The tranquil waters of the Grand Harbour Canal provide a picturesque backdrop, perfect for constructing a dream home that embraces both elegance and functionality. The Harbour Reach community is renowned for its upscale living and convenient access to essential amenities. Residents enjoy proximity to shopping centers, fine dining, and recreational facilities, all while being a short drive from the vibrant heart of George Town. The area is well-regarded for its safety, family-friendly environment, and the quality of life it offers. This property is a rare find, combining the allure of waterfront living with the convenience of urban amenities. It presents a unique canvas for creating a bespoke residence that reflects your personal taste and lifestyle. Do not miss this chance to secure a prime canal-fronting lot in one of Grand Cayman's most desirable neighborhoods. Contact us today to explore the potential of this exceptional property and begin the journey to making your dream home a reality.

## Essential Information

Type <b>Land (For Sale)</b>	Status <b>Current</b>	MLS <b>418871</b>	Listing Type <b>Low density residential</b>
--------------------------------	--------------------------	----------------------	------------------------------------------------

## Key Details

Width <b>117</b>	Depth <b>160</b>	Block & Parcel <b>22E,502</b>	Old Price <b>0.00</b>
Acreage <b>0.3563</b>			

## Additional Fields

Block <b>22E</b>	Parcel <b>502</b>	Views <b>Canal Front</b>	Zoning <b>Low Density residential</b>
Sea Frontage <b>90</b>	Road Frontage <b>117</b>	Soil <b>Marl</b>	